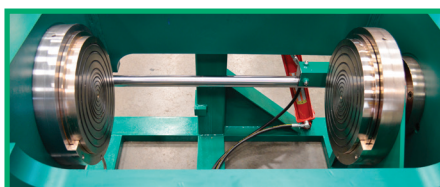
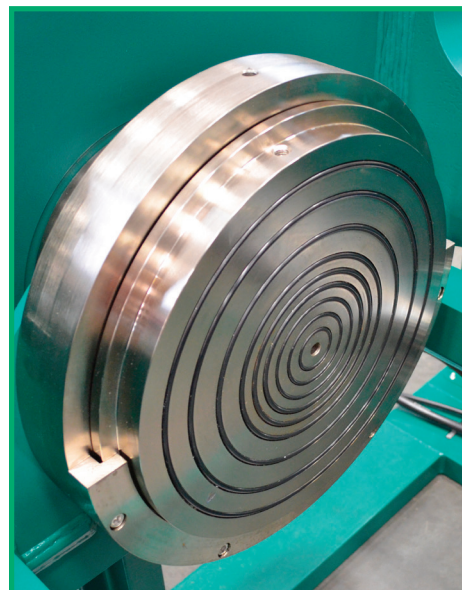
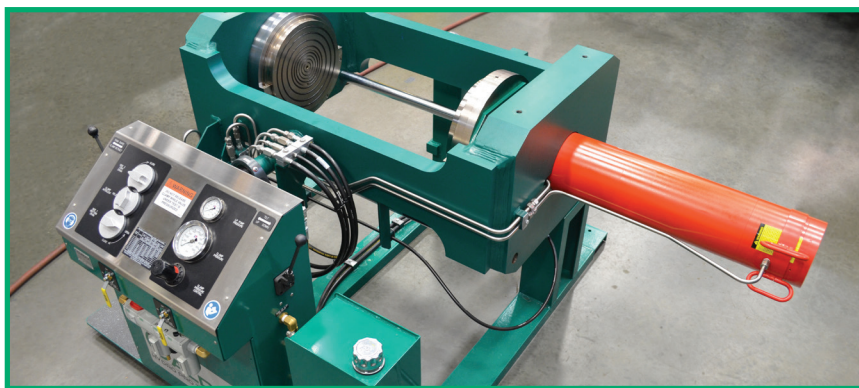


ROBUST. PRODUCTIVE. EASY TO USE.

The new **HYDROPRO™ Universal Straight Valve Tester | USV** can clamp a wide variety of straight-bodied valves and is designed to pair with the **HYDROPRO™ Console** for your valve testing needs.



ROBUST AND UNRIVALED QUALITY

Every component in the USV pressure circuit is **OEM-certified to the maximum specified testing pressure of the system** for increased quality, durability and safety.

Heavy-duty console walls are built with 12-gage steel to protect internal components from damage, making this tester rugged and durable for long life and reliable operation in industrial environments.

CE certified and available world-wide! All CALDER products are available for sale world-wide, including in the European Union and other locations where CE certification is required.

Patent Pending Safety Interlock system with interlocking knobs and valve handles that will not release the clamp pressure until the test pressure valve is opened and internal test pressure is released.

ISO 9001:2015 certified manufacturing ensures all CALDER products are manufactured to the highest quality standards.

Standard 2-year warranty is the longest in the industry! We're confident in our quality, and we back it up! And – ask us how to extend your warranty out to 5 years . . .

VERSATILE, EASY TO USE & INCREDIBLY PRODUCTIVE

Patented Easy-Out Seal Plates in the USV clamping fixture allows seal plates to be changed quickly and easily without the need to mess with special tools, bolts, etc.

Rapid advance and retract for quickly widening or narrowing the gap between the patented Easy-Out Seal Plates to rapidly transition from smaller valves to larger valves.

Quick-fill water circuit supports quick fill water capability included with **HYDROPRO™ Console**, allowing operators to fill valves up fast to reduce overall test time.

Single cylinder hydraulic clamping securely clamps both sides of valve in one motion.

Ability to test multiple valves concurrently when paired with the Calder HydroPro™ Console.

Use a USV clamping fixture to test on one port of the console while setting up the next test piece on the other port.

Unique valve tilting option makes it easy to find the best orientation for loading the valve, and hydraulically tilts the clamp fixture 90 degrees from horizontal to vertical, ensuring removal of all air prior to pressurizing the system.

Intuitive control panel layout makes performing a test procedure efficient and easy on the operator.

Extensive operating manual contains easy to follow tips and includes step-by-step set up instructions for various valve testing operations.

Only shop air needed for clamp and tilt functionality.

Upgradable and expandable. Our modular, common-platform design ensures that all equipment and accessories are plug-and-play compatible to meet your changing business needs.

Unique clamp box cut-outs are designed to accommodate valves with actuators.

WHY CHOOSE CALDER



- Ⓒ The modular, highly configurable and field-upgradable design of the new CALDER tester platform is the most flexible and cost-effective way to manage all your valve testing requirements. It can grow and evolve your business
- Ⓒ The new CALDER test systems are designed to be more accurate and precise than other comparable products
- Ⓒ Unique to the valve testing industry, every CALDER component is OEM certified to the maximum pressure specification of the system, for enhanced safety, quality and durability
- Ⓒ CALDER offers users the ability to simultaneously test multiple valves with one system
- Ⓒ Unmatched in the industry, all CALDER systems are backed by a 2 year warranty
- Ⓒ CALDER has global reach and local support through CLIMAX's vast world-wide network
- Ⓒ CALDER offers a complete line of Valve Repair Machines for lapping, grinding and specialized valve machining operations
- Ⓒ CALDER offers a full portfolio of Test Barriers and Hydraulic Seal Clamps among other products
- Ⓒ CALDER offers SMARTEST™ intelligent data acquisition, analysis and control systems for use with our testers
- Ⓒ Custom turn-key system design services from the most experienced engineers and valve test experts in the business
- Ⓒ Outrageously good customer service. We are available 24/7!



- Ⓒ End-to-End Solutions; from products, consulting, engineering, custom design, training, start-up, after-sale service, spare parts, repair, and rentals, CALDER offers unmatched value in our industry
- Ⓒ All CALDER products are CE certified and manufactured in our ISO 9001:2015 certified factory
- Ⓒ All CALDER products are proudly made in the USA

SPECIFICATIONS

USV-2-25T							
Valve Coverage (Flat / Raised Face Flanges)	Valve Size (nominal)	ANSI Class					
		150	300	600	900	1500	2500
		Maximum Test Pressure PSI (Bar)					
	Inch (mm)	450 PSI (31 Bar)	1125 PSI (76 Bar)	2250 PSI (155 Bar)	3375 PSI (233 Bar)	5625 PSI (388 Bar)	9375 PSI (646 Bar)
	0.5 (12.7)	✓	✓	✓	✓	✓	✓
	0.75 (19.1)	✓	✓	✓	✓	✓	✓
	1 (25.4)	✓	✓	✓	✓	✓	✓
	1.5 (38.1)	✓	✓	✓	✓	✓	
	2 (50.8)	✓	✓	✓	✓	✓	
Specifications	Hydraulic ram: 25 tons (22.7 tonnes)						
	Maximum opening between seal plates: 18 inches (457.2 mm)						
	Minimum opening between seal plates: 4 inches (101.6 mm)						
	Maximum inside width: 14 inches (355.6 mm)						
	Approximate overall dimensions: 50 L x 56 W x 43 H inches (1270 L x 1422 W x 1092 H mm) - see dimensional drawing on page 4						
	Approximate machine weight: 1,300 lbs (591 kg)						
	Approximate shipped weight: 1500 lbs (682 kg)						



SPECIFICATIONS



USV-6-80T							
Valve Coverage (Flat / Raised Face Flanges)	Valve Size (nominal)	ANSI Class					
		150	300	600	900	1500	2500
		Maximum Test Pressure PSI (Bar)					
	Inch (mm)	450 PSI (31 Bar)	1125 PSI (76 Bar)	2250 PSI (155 Bar)	3375 PSI (233 Bar)	5625 PSI (388 Bar)	9375 PSI (646 Bar)
	1 (25.4)		✓	✓	✓	✓	✓
	2 (50.8)	✓	✓	✓	✓	✓	✓
	3 (76.2)	✓	✓	✓	✓	✓	✓
4 (101.6)	✓	✓	✓	✓	✓		
5 (127)	✓	✓	✓	✓			
6 (152.4)	✓	✓	✓				
Specifications	Hydraulic ram: 80 tons (72.6 tonnes)						
	Maximum opening between seal plates: 24 inches (609.6 mm)						
	Minimum opening between seal plates: 4 inches (101.6 mm)						
	Maximum inside width: 18 inches (457.2 mm)						
	Approximate overall dimensions: 46 L x 72 W x 44 H inches (1168.4 L x 1828.8 W x 1117.6 H mm) - see dimensional drawing on page 4						
	Approximate machine weight: 2,300 lbs (1043 kg)						
	Approximate shipped weight: 2,500 lbs (1134 kg)						

USV-8-100T							
Valve Coverage (Flat / Raised Face Flanges)	Valve Size (nominal)	ANSI Class					
		150	300	600	900	1500	2500
		Maximum Test Pressure PSI (Bar)					
	Inch (mm)	450 PSI (31 Bar)	1125 PSI (76 Bar)	2250 PSI (155 Bar)	3375 PSI (233 Bar)	5625 PSI (388 Bar)	9375 PSI (646 Bar)
	1 (25.4)			✓	✓	✓	✓
	2 (50.8)		✓	✓	✓	✓	✓
	3 (76.2)	✓	✓	✓	✓	✓	✓
	4 (101.6)	✓	✓	✓	✓	✓	
	5 (127)	✓	✓	✓	✓	✓	
6 (152.4)	✓	✓	✓	✓			
8 (203.2)	✓	✓	✓				
Specifications	Hydraulic ram: 100 tons (90.7 tonnes)						
	Maximum opening between seal plates: 30 inches (762 mm)						
	Minimum opening between seal plates: 6 inches (152.4 mm)						
	Maximum inside width: 26-1/8 inches (663.6 mm)						
	Approximate overall dimensions: 69 L x 82 W x 39 H inches (1752.6 L x 2082.8 W x 990.6 H mm) - see dimensional drawing on page 4						
	Approximate machine weight: 3,500 lbs (1588 kg)						
	Approximate shipped weight: 3,700 lbs (1678 kg)						

USV-12-150T							
Valve Coverage (Flat / Raised Face Flanges)	Valve Size (nominal)	ANSI Class					
		150	300	600	900	1500	2500
		Maximum Test Pressure PSI (Bar)					
	Inch (mm)	450 PSI (31 Bar)	1125 PSI (76 Bar)	2250 PSI (155 Bar)	3375 PSI (233 Bar)	5625 PSI (388 Bar)	9375 PSI (646 Bar)
	1 (25.4)				✓	✓	✓
	2 (50.8)		✓	✓	✓	✓	✓
	3 (76.2)		✓	✓	✓	✓	✓
	4 (101.6)	✓	✓	✓	✓	✓	✓
	5 (127)	✓	✓	✓	✓	✓	
	6 (152.4)	✓	✓	✓	✓	✓	
8 (203.2)	✓	✓	✓	✓			
10 (254)	✓	✓	✓				
12 (304.8)	✓	✓					
Specifications	Hydraulic ram: 150 tons (136.1 tonnes)						
	Maximum opening between seal plates: 33 inches (838.2 mm)						
	Minimum opening between seal plates: 5 inches (127 mm)						
	Maximum inside width: 29-5/8 inches (752.5 mm)						
	Approximate overall dimensions: 73 L x 92 W x 43 H inches (1854.2 L x 2336.8 W x 1092.2 H mm) - see dimensional drawing on page 4						
	Approximate machine weight: 4,800 lbs (2177 kg)						
Approximate shipped weight: 5,000 lbs (2268 kg)							

USV-16-200T							
Valve Coverage (Flat / Raised Face Flanges)	Valve Size (nominal)	ANSI Class					
		150	300	600	900	1500	2500
		Maximum Test Pressure PSI (Bar)					
		450 PSI (31 Bar)	1125 PSI (76 Bar)	2250 PSI (155 Bar)	3375 PSI (233 Bar)	5625 PSI (388 Bar)	9375 PSI (646 Bar)
	Inch (mm)						
	2 (50.8)			✓	✓	✓	✓
	3 (76.2)		✓	✓	✓	✓	✓
	4 (101.6)	✓	✓	✓	✓	✓	✓
	5 (127)	✓	✓	✓	✓	✓	✓
	6 (152.4)	✓	✓	✓	✓	✓	
8 (203.2)	✓	✓	✓	✓			
10 (254)	✓	✓	✓				
12 (304.8)	✓	✓	✓				
14 (355.6)	✓	✓					
16 (406.4)	✓	✓					
Specifications	Hydraulic ram: 200 tons (181.4 tonnes)						
	Maximum opening between seal plates: 37 inches (939.8 mm)						
	Minimum opening between seal plates: 5 inches (127 mm)						
	Maximum inside width: 29-1/2 inches (749.3 mm)						
	Approximate overall dimensions: 77 L x 106 W x 48 H inches (1955.8 L x 2692.4 W x 1219.2 H mm) - see dimensional drawing on page 4						
	Approximate machine weight: 6,800 lbs (3084 kg)						
	Approximate shipped weight: 7,000 lbs (3175 kg)						

All dimensions should be considered reference. Contact your CALDER Representative for precision dimensions. Specifications are subject to change without notice. There are no systems or components on this machine that are capable of producing hazardous EMC, UV or other radiation hazards. The machine does not use lasers nor does it create hazardous materials such as gasses or dust.

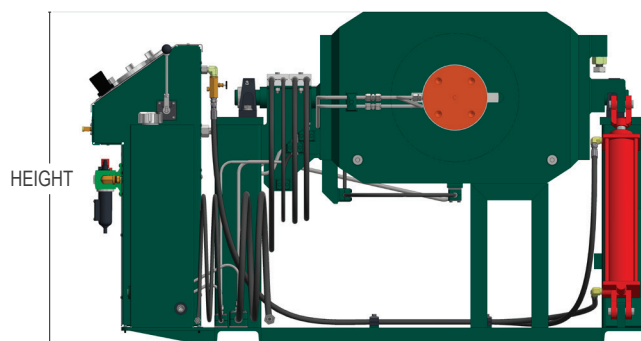
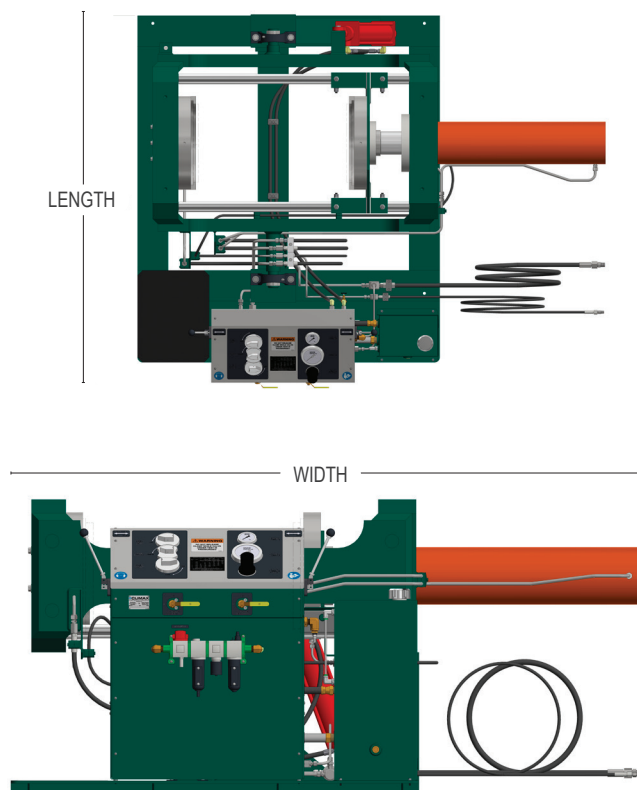
SPECIFICATIONS



USV-24-300T						
Valve Coverage (Flat / Raised Face Flanges)	Valve Size (nominal)	ANSI Class				
		150	300	600	900	1500
		2500	Maximum Test Pressure PSI (Bar)			
		450 PSI (31 Bar)	1125 PSI (76 Bar)	2250 PSI (155 Bar)	3375 PSI (233 Bar)	5625 PSI (388 Bar)
		9375 PSI (646 Bar)				
	Inch (mm)					
	8 (203.2)	✓	✓	✓	✓	✓
	10 (254)	✓	✓	✓	✓	✓
	12 (304.8)	✓	✓	✓	✓	✓
	14 (355.6)	✓	✓	✓	✓	✓
	16 (406.4)	✓	✓	✓	✓	✓
	18 (457.2)	✓	✓	✓	✓	✓
	20 (508)	✓	✓	✓	✓	✓
	24 (609.6)	✓	✓	✓	✓	✓
Specifications						
Hydraulic ram: 300 tons (272 tonnes)						
Maximum opening between seal plates: 45 inches (1143 mm)						
Minimum opening between seal plates: 10 inches (254 mm)						
Maximum inside width: 38 inches (965.2 mm)						
Approximate overall dimensions: 91 L x 131 W x 74 H inches (2311.4 L x 3327.4 W x 1879.6 H mm) - see dimensional drawing below						
Approximate machine weight: 20,000 lbs (9072 kg)						
Approximate shipped weight: 20,500 lbs (9299 kg)						

USV-24-400T						
Valve Coverage (Flat / Raised Face Flanges)	Valve Size (nominal)	ANSI Class				
		150	300	600	900	1500
		2500	Maximum Test Pressure PSI (Bar)			
		450 PSI (31 Bar)	1125 PSI (76 Bar)	2250 PSI (155 Bar)	3375 PSI (233 Bar)	5625 PSI (388 Bar)
		9375 PSI (646 Bar)				
	Inch (mm)					
	8 (203.2)	✓	✓	✓	✓	✓
	10 (254)	✓	✓	✓	✓	✓
	12 (304.8)	✓	✓	✓	✓	✓
	14 (355.6)	✓	✓	✓	✓	✓
	16 (406.4)	✓	✓	✓	✓	✓
	18 (457.2)	✓	✓	✓	✓	✓
	20 (508)	✓	✓	✓	✓	✓
	24 (609.6)	✓	✓	✓	✓	✓
Specifications						
Hydraulic ram: 400 tons (362.9 tonnes)						
Maximum opening between seal plates: 46 inches (1168.4 mm)						
Minimum opening between seal plates: 10 inches (254 mm)						
Maximum inside width: 38 inches (965.2 mm)						
Approximate overall dimensions: 91 L x 131 W x 74 H inches (2311.4 L x 3327.4 W x 1879.6 H mm)- see dimensional drawing below						
Approximate machine weight: 20,000 lbs (9072 kg)						
Approximate shipped weight: 20,500 lbs (9299 kg)						

Dimensional Drawing (see specifications for model specific dimensions)



All dimensions should be considered reference. Contact your CALDER Representative for precision dimensions. Specifications are subject to change without notice. There are no systems or components on this machine that are capable of producing hazardous EMC, UV or other radiation hazards. The machine does not use lasers nor does it create hazardous materials such as gasses or dust.

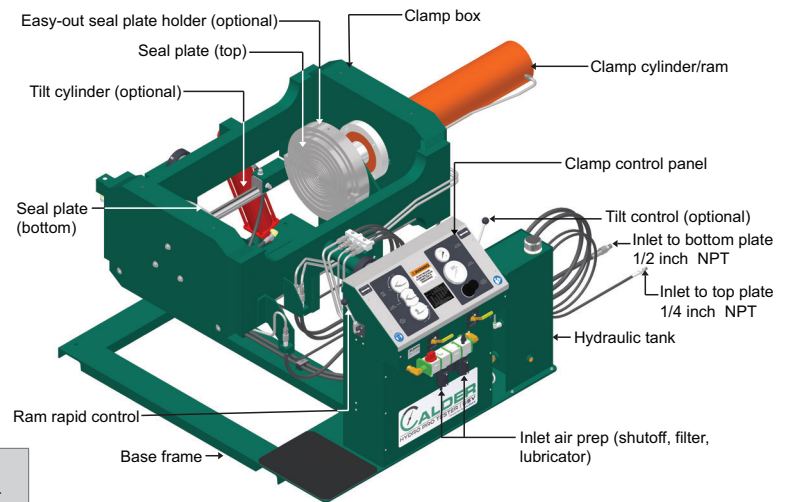
USV CONFIGURATIONS



To configure your **HYDROPro™ USV** simply select from the options you need then contact your CALDER representative.

The **HYDROPro™ USV** comes standard with 10,000 PSI (679 bar) rated hydraulic clamping components and plumbing, air-operated hydraulic pump rated to 10,700 PSI (738 bar) preset to 9850 PSI (679 bar), safety interlock systems, clamp pressure gauge, hydraulic reservoir, air regulator kit, quick water fill inlet line, hydraulic clamping chart and operators manual.

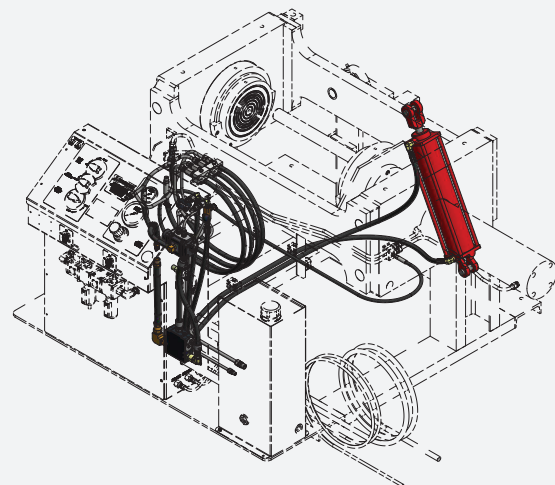
HYDROPro™ USV



Model	Part Number	Fixed seal plates	Easy-out holder	Non-tilt	Tilt
USV-2-25T	90206	√		√	
	90650	√			√
	90652		√	√	
	90651		√		√
USV-6-80T	88581	√		√	
	88576	√			√
	88591		√	√	
	88572		√		√
USV-8-100T	88273	√		√	
	88271	√			√
	88272		√	√	
	89021		√		√
USV-12-150T	87991	√		√	
	87989	√			√
	87990		√	√	
	87988		√		√
USV-16-200T	88583	√		√	
	88577	√			√
	88592		√	√	
	88573		√		√
USV-24-300T	88586	√		√	
	88578	√			√
	88593		√	√	
	88574		√		√

Model	Part Number	Fixed seal plates	Easy-out holder	Non-tilt	Tilt
USV-24-400T	88590	√		√	
	88579	√			√
	88594		√	√	
	88575		√		√

Tilt – rotates clamped valve 90 degrees from the horizontal to vertical position



USV ACCESSORIES



Our patented Easy-Out Seal Plate Holders allow quick change-out of seal plates from flanged to other valve end type connections without the use of special tools, bolts, nuts or gaskets.

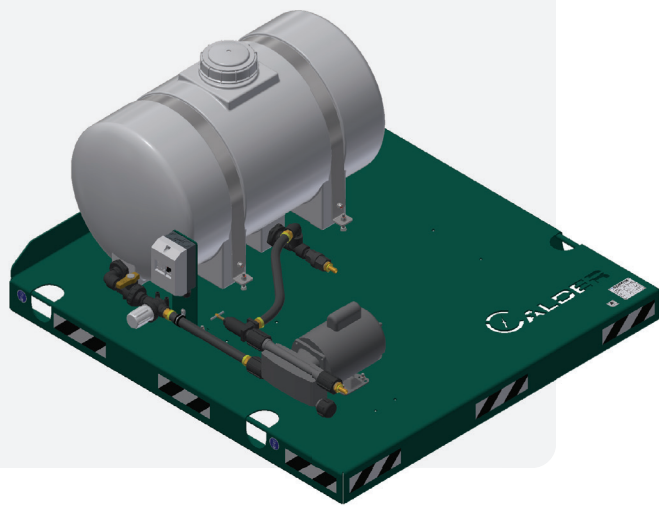
Easy-out seal plates for FF/RF flanges, includes set of two plates (requires easy-out holder option)

Model	Part Number	
USV-6-80T	88666	
USV-8-100T	88357	
USV-12-150T	87996	
USV-16-200T	88473	
USV-24-300T	88671	
USV-24-400T	88671	

The **CALDER Recirculation Tank** offers a solution for supplying and storing fluid used for testing valves. The onboard pump supplies 3.3 gpm at 70 psi to the console. The return port on the tank allows connection to the drain line, to reclaim the fluid for the next test. The Recirculation Tank is compatible with the CALDER Universal Straight Valve Tester | USV and the Universal Flanged Valve Tester | UFV.

Recirculation Tank

35 Gallons	83421
65 Gallons	90127
125 Gallons	90126



APPLICATIONS

Industries:

Oil & Gas (Upstream, Pipeline, Downstream)
Power generation (Nuclear, Geothermal, Fossil)

Military (Nuclear)
Chemical processing
Valve service industry
Valve manufacturing

Typical Applications:

Gate Valve Testing
Globe Valve Testing
Check Valve Testing
Ball Valve Testing

Butterfly Valve Testing
Blind Flanges
Hydraulic Flange Seals
Safety Relief Valve Testing

CALDER VALVE INSTITUTE AND CARE PROGRAM



The Right Training by the Right People!

Our engineers and valve test experts have been teaching the fundamentals and fine points of valve testing operation for as long as we've been inventing and building advanced valve testing systems.

Professional, Experienced Instructors

All training programs are taught by our professional and experienced OEM CALDER trainers. Your instructor will provide valuable information on operator safety, valve test system set-up, operation, and how to keep your valve tester in top operating condition.



CALDER CARE™ Program

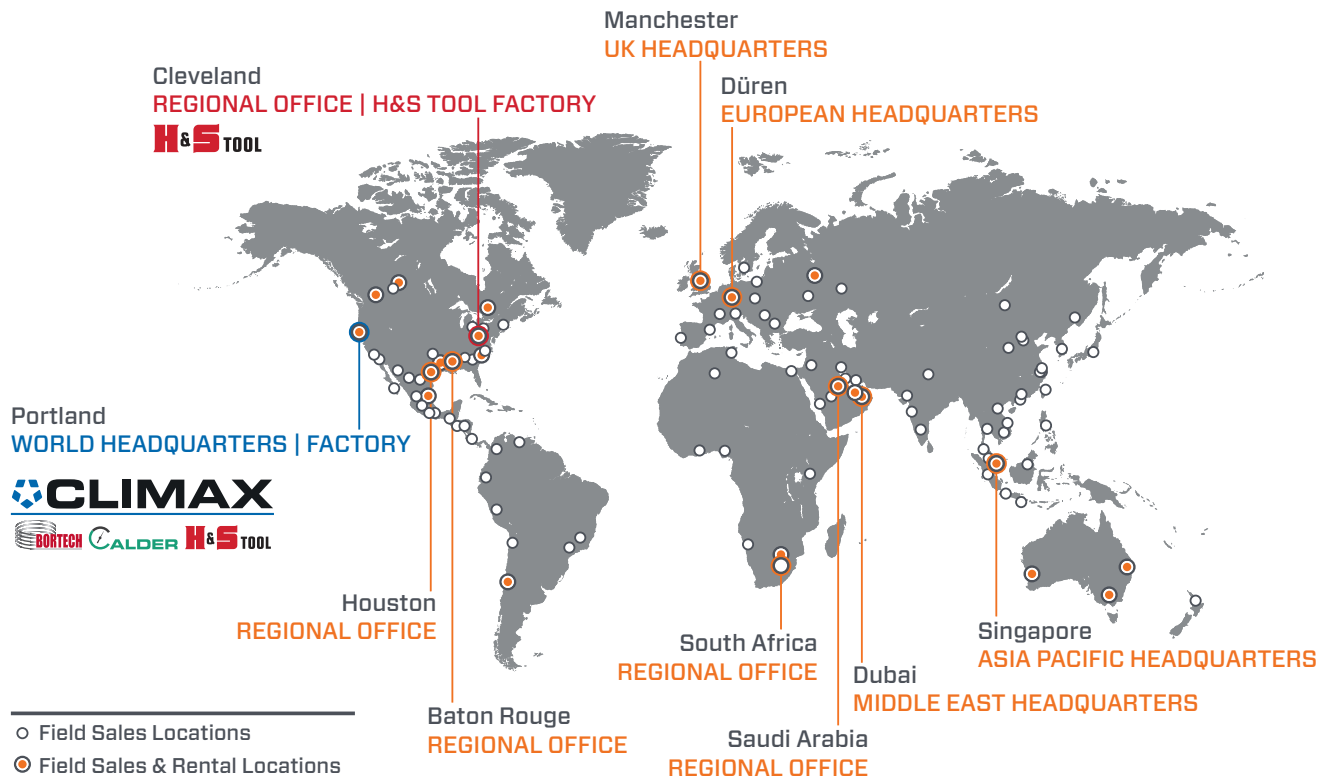
- ✓ Parts Replacement Guarantee – All parts replaced for the term of the package
- ✓ Technical Assistance by Phone – A **CALDER CARE™** Hotline for 24/7 US-based expert advice from repair professionals
- ✓ On-Site Preventive Maintenance – Yearly PM visit by a Certified CALDER Service Technician
- ✓ Extended Warranty Coverage – CALDER is the only company in our industry with a standard 2 year warranty and offering extended warranty programs out to 5 years!

Sign up today for training at one of our **seven** Global CLIMAX | CALDER training centers.

- Portland, Oregon
- Houston, Texas
- Baton Rouge, Louisiana
- Cleveland, Ohio
- Manchester, United Kingdom
- Düren, Germany
- Dubai, United Arab Emirates



GLOBAL LOCATIONS



Call CLIMAX | CALDER for:

RENTALS

On selected models. With 20+ worldwide rental depot locations, you are never far away from CLIMAX.

OEM TRAINING

If you need training or on-site consultation, we're famous for it!

SPARES, REPAIR & MAINTENANCE

Call us for anything you need to keep your system running in top condition.

CUSTOM PROJECTS

Custom turn-key system design services from the most experienced engineers in the business!

Follow us on:



World Headquarters

Address: 2712 E. 2nd St, Newberg, Oregon 97132
Tel: +1 503 538 2185
Fax: +1 503 538 7600
Email: info@cpmt.com

Asia Pacific

Address: 10, Raeburn Park, #02-08, Singapore 088702
Tel: +65 6801 0662
Fax: +65 6801 0699
Email: ClimaxAsia@cpmt.com

European

Address: Am Langen Graben 8, 52353 Dürren, Germany
Tel: (+49) (0) 2421 9177 0
Fax: (+49) (0) 2421 9177 29
Email: ClimaxEurope@cpmt.com

Middle East

Address: C9, Phase 5, Light Industrial Units, DSO, Dubai, UAE
Tel: +971 4 321 0328
Email: ClimaxUAE@cpmt.com

United Kingdom

Address: Unit 3 Martel Court, S.Park Business Park, Stockport SK1 2AF
Tel: +44 (0) 161 406 1720
Email: ClimaxUK@cpmt.com